

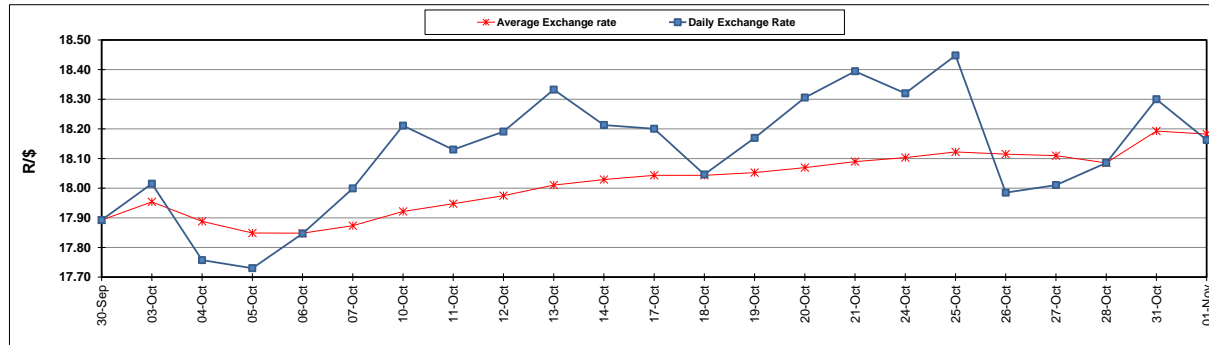
	PETROL 95 ULP	PETROL 93 ULP & LRP	DIESEL 0.05%	DIESEL 0.005%	ILL. PAR.
GAUTENG PUMP PRICE (SA c/l) AS FROM 02/11/2022	2,287.000	2,257.000	-	-	-
WHOLESALE PRICE (SA c/l) AS FROM 02/11/2022	-	-	2,548.960	2,574.360	1,776.288
SINGLE NATIONAL MAXIMUM RETAIL PRICE	-	-	-	-	2,343.000
BASIC FUEL PRICE - 01/11/2022 (SA c/l)	1,283.886	1,248.525	1,621.575	1,654.149	1,527.118
PRESS RELEASE CONTRIBUTION TO BFP 28/10/2022 - 01/11/2022 (SA c/l)	1,145.750	1,115.750	1,523.630	1,548.030	1,481.128
UNIT OVER/(UNDER) RECOVERY - 01/11/2022 (SA c/l)	(138.136)	(132.775)	(97.945)	(106.119)	(45.990)
AVERAGE BASIC FUEL PRICE 28/10/2022 - 01/11/2022	1,271.339	1,236.301	1,659.969	1,689.470	1,556.001
AVERAGE UNIT OVER/(UNDER) RECOVERY 28/10/2022 - 01/11/2022	(125.589)	(120.551)	(136.339)	(141.440)	(74.873)

ANALYSIS MOVEMENT OF AVERAGE OVER/(UNDER) RECOVERY

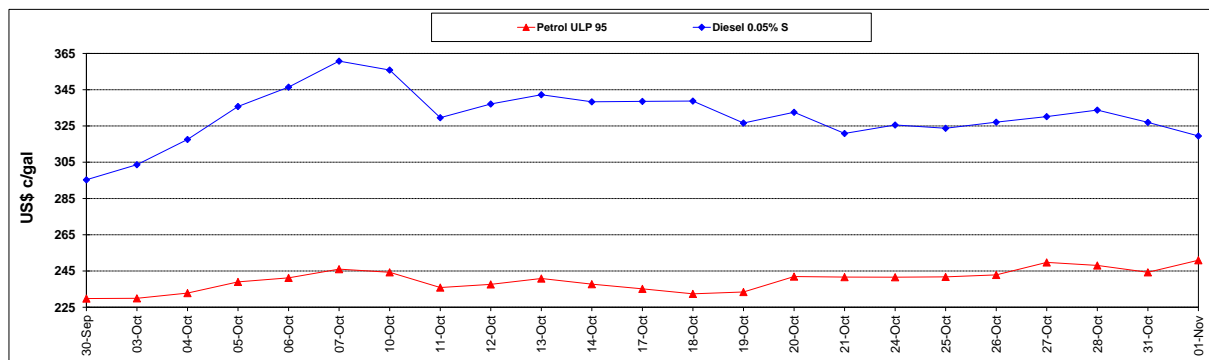
	PETROL 95	PETROL 93	DIESEL 0.05%	DIESEL 0.005%	ILL. PAR.
- MOVEMENT IN INTERNATIONAL PRODUCT PRICES	(120.506)	(115.608)	(129.702)	(134.685)	(68.652)
- MOVEMENT IN EXCHANGE RATE	(5.083)	(4.943)	(6.637)	(6.755)	(6.221)
AVERAGE UNIT OVER/(UNDER) RECOVERY 28/10/2022 - 01/11/2022	(125.589)	(120.551)	(136.339)	(141.440)	(74.873)

R/\$ EXCHANGE RATE - (R/\$18.1625 - 01/11/2022)

EXCHANGE RATE USED IN BASIC FUEL PRICE



INTERNATIONAL PRODUCT PRICES OF BASKET USED IN BASIC FUEL PRICE



BASIC FUEL PRICE IN SA CENTS PER LITRE

